



# EpiSep HS (Hybridization Slide)<sup>®</sup>

Model # A3104

## WAVESENSE

### Intended Use:

For In Vitro Diagnostic Use.

Non-Sterile

EpiSep HS (Hybridization Slide)<sup>®</sup> is a microscope slide used for cell collection and tissue processing.



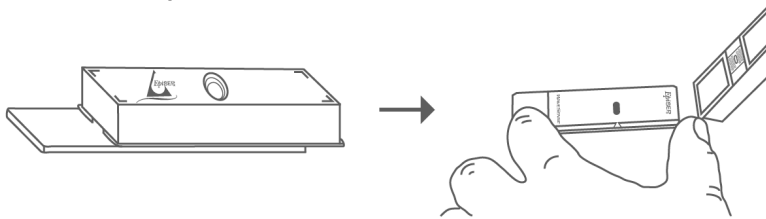
### Description:

EpiSep HS<sup>®</sup> can be used whenever it is desirable to reduce or eliminate multiple centrifugation and cell transfer steps associated with slide preparation for Fluorescence In Situ Hybridization (FISH). When used with magnetically labeled target cells, and a permanent magnet, cell suspensions can simultaneously be de-bulked of background cells as target cells are deposited on the slide surface. EpiSep HS<sup>®</sup> is compatible with reagents, operating temperature ranges, and equipment typically used in FISH.

### Supplied As:

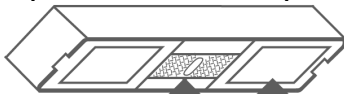
Catalog #	Contains
A3104-10	10 Pack

### Featured Components:



Absorbent cap is removable to expose cells on a standard 1" x 3" glass microscope slide.

### Disposable Absorbent Cap



### Features

Absorbent pads capture sample and reagent waste for disposal (maximum capacity of 8 mL).

Integrated lateral flow pathway spreads captured cells to reduce cell stacking and limits inspection area to less than 10 x 12 mm.

### Microscope Slide



Pointer indicates the centerline where paramagnetically labeled cells will be captured in an, approximately 8mm in width and 9mm in height, inspection area when used with the EpiSep NSD II<sup>®</sup> (Model # A1103). For details on using the EpiSep HS<sup>®</sup> with off-the-shelf magnets, or customizing configurations for your application, please contact Customer Support at 800-807-7760.

Product Specification Sheet



15339 Barranca Pkwy  
Irvine, CA 92618 USA  
www.WaveSense.net

Toll Free: 800.807.7760  
Phone: 949.341.1980  
Fax: 949.341.1982  
Contact@WaveSense.net

ML080107-1  
© 01/25/12



# EpiSep HS (Hybridization Slide)<sup>®</sup>

Model # A3104

**WAVESENSE**

## **Storage:**

Store dry at room temperature.

## **Compatible Accessories (not included):**

- EpiSep NSD II<sup>®</sup> (Neo-Magnetic Slide Dock) Model # A1103-1

## **Material Safety Data:**

Contains glass components. In the event of breakage, wear gloves and eye protection for clean up as some pieces may be sharp and could cause injury.

Product Specification Sheet

This product is covered by one or more claims of United States Patent Numbers 6,136,549; 6,713,271; 6,991,912 and Australian Patent Number 772407.



15339 Barranca Pkwy  
Irvine, CA 92618 USA  
www.WaveSense.net

Toll Free: 800.807.7760  
Phone: 949.341.1980  
Fax: 949.341.1982  
Contact@WaveSense.net

ML080107-1  
© 01/25/12

Page 2 of 2